

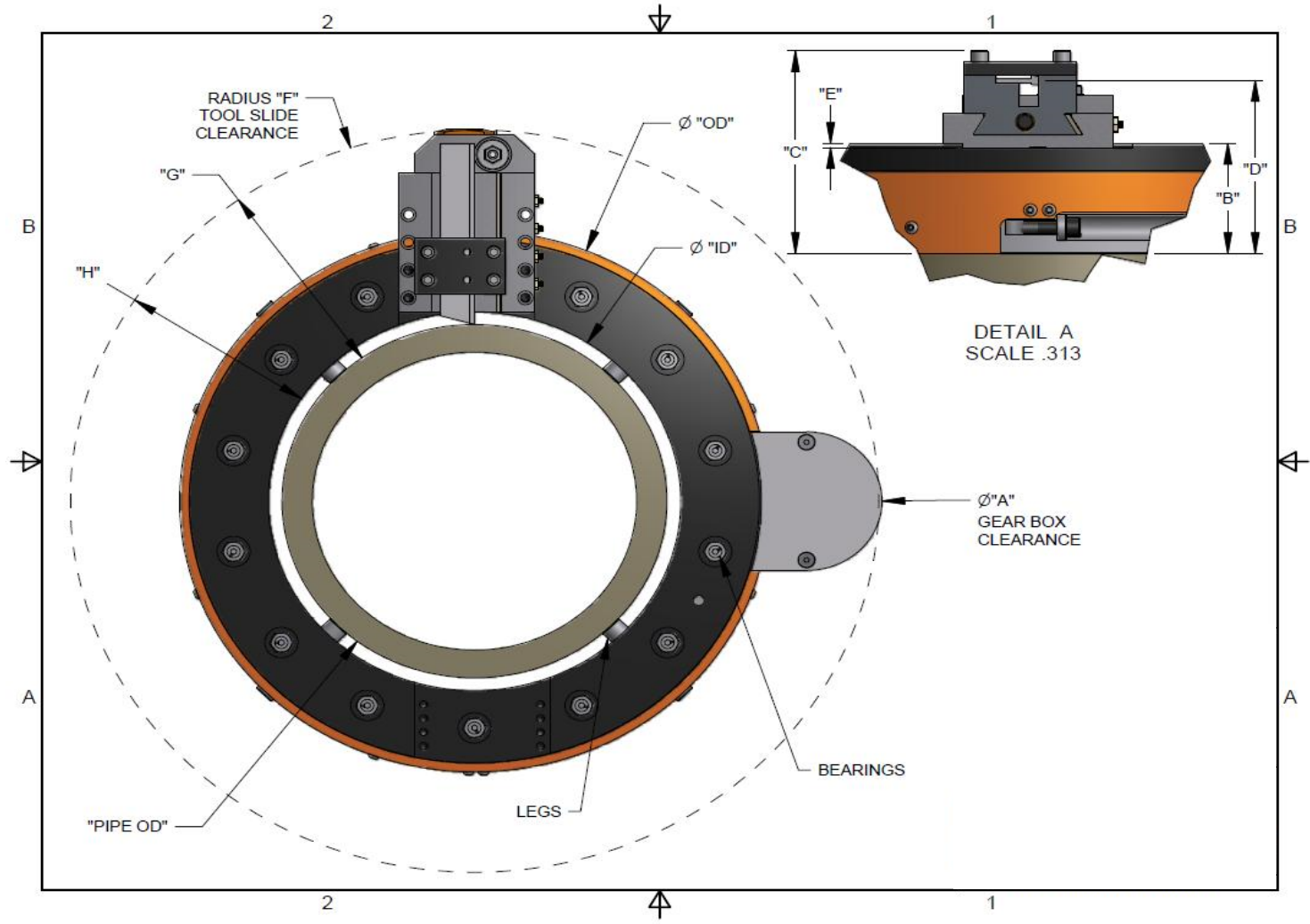
04" - 62" SPLIT FRAME - SPEC SHEET (inches)

	SF4	SF6	SF8	SF10	SF12	SF14	SF16	SF18	SF20	SF22	SF24	SF26	SF28	SF30	SF32	SF34	SF36	SF38	SF40	SF42	SF44	SF46	SF48	SF50	SF52	SF56	SF62	ID
<b>ID</b>	4.75"	7.67"	9.67"	11.67"	13.67"	15.00"	17.00"	19.00"	21.00"	23.00"	25.00"	27.00"	29.00"	31.00"	33.00"	35.00"	37.00"	39.00"	41.00"	43.00"	45.00"	47.00"	49.00"	51.00"	53.00"	57.00"	63.00"	<b>ID</b>
<b>OD</b>	9.37"	13.54"	15.54"	17.54"	19.54"	20.87"	22.87"	24.87"	26.87"	28.87"	30.87"	32.98"	34.98"	36.98"	38.98"	40.98"	42.98"	44.98"	46.98"	48.98"	50.98"	52.98"	54.98"	56.98"	58.98"	62.98"	68.98"	<b>OD</b>
<b># of LEGS</b>	4	4	4	4	4	4	4	4	4	4	8	8	8	8	8	8	8	8	8	8	8	8	8	8	8	8	8	<b># of LEGS</b>
<b># of BEARINGS</b>	6	10	10	10	14	14	18	18	20	20	20	24	28	28	32	32	36	36	40	40	44	44	48	48	52	56	60	<b># of BEARINGS</b>
<b>*A</b>	16.89"	21.00"	23.00"	25.00"	27.00"	28.33"	30.33"	32.33"	34.33"	36.33"	38.33"	41.10"	43.10"	45.10"	47.10"	49.10"	51.10"	53.10"	55.10"	57.10"	59.10"	61.10"	63.10"	65.10"	67.10"	71.10"	77.10"	<b>*A</b>
<b>B</b>	3.18"	3.18"	3.18"	3.18"	3.18"	3.18"	3.18"	3.18"	3.18"	3.18"	3.18"	3.30"	3.30"	3.30"	3.30"	3.30"	3.30"	3.30"	3.30"	3.30"	3.30"	3.30"	3.30"	3.30"	3.30"	3.30"	3.30"	<b>B</b>
<b>C</b>	5.97"	5.84"	5.84"	5.84"	5.84"	5.84"	5.84"	5.84"	5.84"	5.84"	5.84"	5.84"	5.84"	5.84"	5.84"	5.84"	5.84"	5.84"	5.84"	5.84"	5.84"	5.84"	5.84"	5.84"	5.84"	5.84"	5.84"	<b>C</b>
<b>D</b>	5.113"	4.984"	4.984"	4.984"	4.984"	4.984"	4.984"	4.984"	4.984"	4.984"	4.984"	4.984"	4.984"	4.984"	4.984"	4.984"	4.984"	4.984"	4.984"	4.984"	4.984"	4.984"	4.984"	4.984"	4.984"	4.984"	4.984"	<b>D</b>
<b>E</b>	0	.125"	.125"	.125"	.125"	.125"	.125"	.125"	.125"	.125"	.125"	.25"	.25"	.25"	.25"	.25"	.25"	.25"	.25"	.25"	.25"	.25"	.25"	.25"	.25"	.25"	.25"	<b>E</b>
<b>**WEIGHT (APPROX)</b>	38 lbs <i>not lightened</i>	61 lbs	70 lbs	78 lbs	89 lbs	101 lbs	110 lbs	116 lbs	122 lbs	143 lbs	140 lbs	158 lbs	177 lbs	236 lbs	242 lbs	264 lbs	276 lbs	290 lbs	308 lbs	316 lbs	336 lbs	348 lbs	365 lbs	374 lbs	392 lbs	n/a	460 lbs	<b>**WEIGHT (APPROX)</b>

\* Dimension A is referencing the clearance for the Gearbox; Reference spec sheet AE-SPEC-1006 for tool slide clearance dimensions.

\*\* Weights are based on 4" - 28" with lightened pockets; 30" and above are not lightened. Listed weight does not include any accessories; this is machine only weight.

Tool Slide Clearances:		4.5	6.625	8.625	10.75	12.75	14	16	18	20	22	24	26	28	30	32	34	36	38	40	42	44	46	48	50	52	56	62	OD of Pipe
<b>F</b>	0"	5.25	7.19	8.19	9.19	10.19	10.88	11.88	12.88	13.88	14.88	15.88	16.88	17.88	18.88	19.88	20.88	21.88	22.88	23.88	24.88	25.88	26.88	27.88	28.88	29.88	31.88	34.88	0"
	3"	6.50	8.50	9.50	10.50	11.50	12.13	13.13	14.13	15.13	16.13	17.13	18.13	19.13	20.13	21.13	22.13	23.13	24.13	25.13	26.13	27.13	28.13	29.13	30.13	31.13	33.13	36.13	3"
	4"	7.50	9.50	10.50	11.50	12.50	13.13	14.13	15.13	16.13	17.13	18.13	19.13	20.13	21.13	22.13	23.13	24.13	25.13	26.13	27.13	28.13	29.13	30.13	31.13	32.13	34.13	37.13	4"
	5"	-	-	-	-	13.50	14.13	15.13	16.13	17.13	18.13	19.13	20.13	21.13	22.13	23.13	24.13	25.13	26.13	27.13	28.13	29.13	30.13	31.13	32.13	33.13	35.13	38.13	5"
<b>G</b>	0"	3.00	3.88	3.88	3.88	3.88	3.88	3.88	3.88	3.88	3.88	3.88	3.88	3.88	3.88	3.88	3.88	3.88	3.88	3.88	3.88	3.88	3.88	3.88	3.88	3.88	3.88	0"	
	3"	4.13	5.13	5.13	5.13	5.13	5.13	5.13	5.13	5.13	5.13	5.13	5.13	5.13	5.13	5.13	5.13	5.13	5.13	5.13	5.13	5.13	5.13	5.13	5.13	5.13	5.13	3"	
	4"	5.13	6.13	6.13	6.13	6.13	6.13	6.13	6.13	6.13	6.13	6.13	6.13	6.13	6.13	6.13	6.13	6.13	6.13	6.13	6.13	6.13	6.13	6.13	6.13	6.13	6.13	4"	
	5"	-	-	-	-	7.13	7.13	7.13	7.13	7.13	7.13	7.13	7.13	7.13	7.13	7.13	7.13	7.13	7.13	7.13	7.13	7.13	7.13	7.13	7.13	7.13	7.13	5"	
<b>H</b>	0"	2.88	3.38	3.38	3.38	3.38	3.38	3.38	3.38	3.38	3.38	3.38	3.38	3.38	3.38	3.38	3.38	3.38	3.38	3.38	3.38	3.38	3.38	3.38	3.38	3.38	3.38	0"	
	3"	4.25	4.63	4.63	4.63	4.63	4.63	4.63	4.63	4.63	4.63	4.63	4.63	4.63	4.63	4.63	4.63	4.63	4.63	4.63	4.63	4.63	4.63	4.63	4.63	4.63	4.63	3"	
	4"	5.25	5.63	5.63	5.63	5.63	5.63	5.63	5.63	5.63	5.63	5.63	5.63	5.63	5.63	5.63	5.63	5.63	5.63	5.63	5.63	5.63	5.63	5.63	5.63	5.63	5.63	4"	
	5"	-	-	-	-	6.63	6.63	6.63	6.63	6.63	6.63	6.63	6.63	6.63	6.63	6.63	6.63	6.63	6.63	6.63	6.63	6.63	6.63	6.63	6.63	6.63	6.63	5"	



## PORTABLE PIPE CUTTERS (SPLIT FRAMES) – OD MOUNTED

AVAILABLE IN 2" INCREMENTS FROM 4" – 62"  
SPECIALTY SIZES 70", 80", 100", 120" AND 150"

### TOUGH

- NITRIDE FINISH TO PREVENT CORROSION.
- TOOL SLIDES MADE OF HIGH STRENGTH ALLOY STEEL WITH HIGH PHOS-NICKEL FINISH.
- 4140 PREHEATED STEEL FRAME DESIGN.

### SIMPLE

- MACHINE QUICKLY SPLITS TO MOUNT AROUND O.D. OF IN-LINE PIPE.
- QUICK CHANGE LEG DESIGN.
- ONE MAN CAN EASILY SET UP IN MINUTES.

### VERSATILE

- OPTIONAL LIGHT WEIGHT DESIGN.
- CUTTING SPEED FROM .002" PER REVOLUTION TO .12" REVOLUTION TO .12"
- CAN BE MOUNTED ON STRAIGHT RUN PIPE OR ELBOWS.

### TRIP ENGAGEMENT

- .002" PER REVOLUTION WITH SINGLE TRIP PIN ENGAGED
- .004" PER REVOLUTION WITH BOTH TRIP PINS ENGAGED.

### STANDARD TOOL SLIDES

- LOW CLEARANCE
- 4"
- 5"
- 6"
- 10"

### MOTOR OPTIONS

- PNEUMATIC – HEAVY DUTY (90PSI/90CFM)
- PNEUMATIC – RIGHT ANGLE (90PSI/90CFM)
- HYDRAULIC (8GPM) / WITH 15HP POWER UNIT
- ELECTRIC

### AVAILABLE CUTTING ATTACHMENTS

- AXIAL FEED
- BRIDGE SLIDE
- COUNTER BORE – STRAIGHT
- COUNTER BORE – SWIVEL
- FACING ATTACHMENT (125 OR 250 FINISH)
- OUT OF ROUND SLIDES

STANDARD RENTAL/PURCHASE INCLUDES: (1) HD MOTOR, (2) SLIDES, (1) TRIP, COMPLETE SET OF MOUNTING FOOT PADS (STD & POINTED), (1) AIR CADDY & WHIP, (1) SET OF HAND TOOLS, STORAGE BOX & MANUAL.